

## Micro SD Breakout Board For ATOMAS Modules

The ATOMAS SDIO breakout board is a micro SD add-on board designed for use with the ATOMAS-MICRO and ATOMAS-MINI encoders. This optional module brings edge recording support to your design by adding support for a removable micro SD memory card.

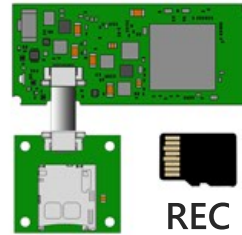


### Features

- Support for micro SD memory card format
- Direct connect to ATOMAS encoder modules
- Miniaturized form factor

### Enabling Edge Recording

The ATOMAS SDIO breakout board is designed to interface with the ATOMAS encoder modules in order to provide a compact removable micro SD storage option. Adding this breakout board enables use of the ATOMAS's internal video edge recording functions.



#### Target Applications

- Video surveillance cameras
- Industrial image processing
- Handheld or mobile devices
- UAV / military applications

#### DIMENSIONS

